

Discrepancy Control and Indication Switch



Position Indicator & Eyeball Indicator



Indicator Lamp with Text



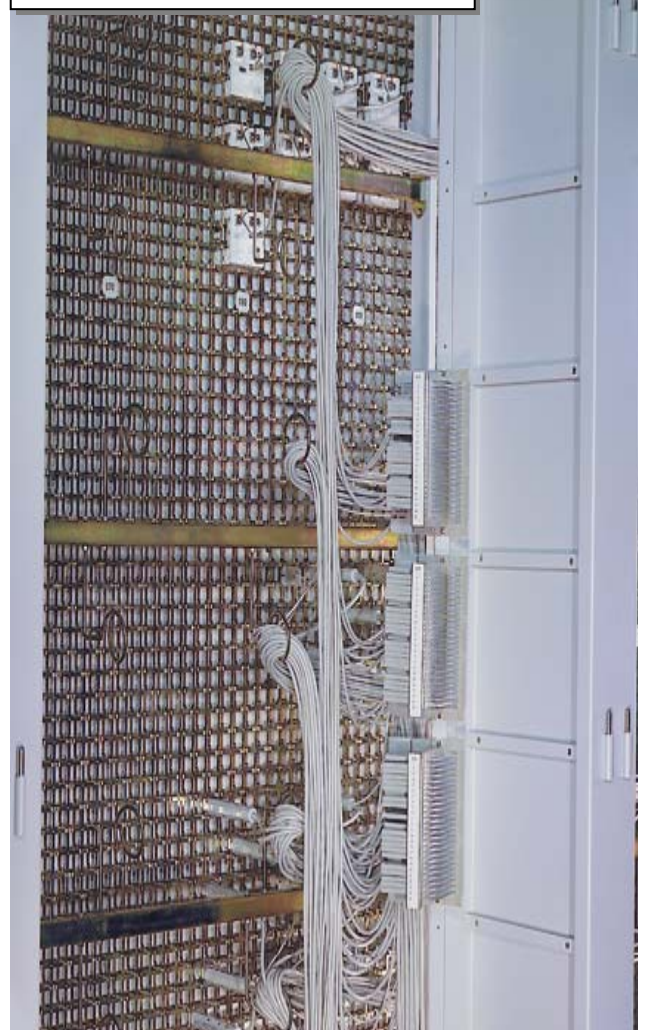
Lamp Module



LED Unit and LED Display



Steel Support Framework



Illuminated Push Button



Marker Switch



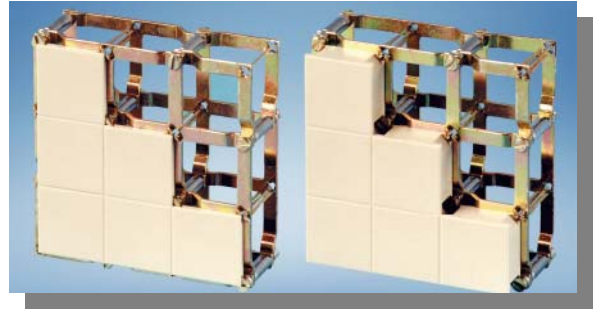
Mauell – Mosaic Mimic Display

Mosaic System M

Self-supporting grid system with very high rigidity and low weight for desk plates and mosaic panels of every size and with high component density.

The grid system consists of cross- and tee-elements, bolted together with spacers and screws. The grid area is filled with normal tiles of 3 mm thickness or box tiles of 12mm thickness. The grid system can be mounted into circular or curved supporting structures.

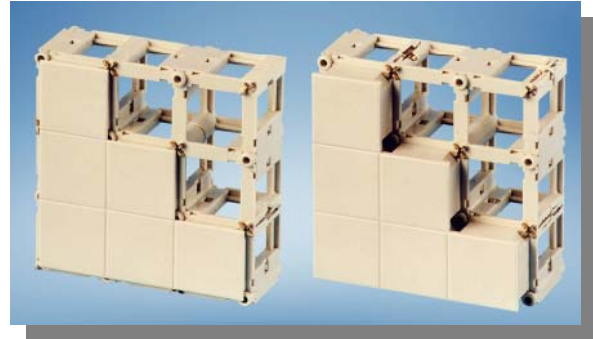
Basic colours for standard tiles: pebble grey



Mosaic System K

Self-supporting grid system with low weight for small and medium size mosaic panels.

The grid area is filled with normal tiles of 3 mm thickness or box tiles of 12mm thickness. The grid system consists of cross- and tee-elements, plugged together with locking connecting elements. The grid system can be mounted into circular or curved supporting structures.



Mosaic System T (TX)

Self-supporting grid system with high rigidity and low weight for medium and large size mosaic panels with high component density.

The grid area is filled with normal tiles of 3 mm thickness or box tiles of 12mm thickness. The grid system consists of modules which are plugged together with their dovetail joints. In the TX system, the catch springs are replaced by plastic locks.



Tile size	Mosaic Type M	R	G	Mosaic Type K	R	G	Mosaic Type T(TX)	R	G	Mosaic Type MK	R	G
18x18	M18MK M18K	3	18.6 23.5	M18K	10	12.3						
24x24	M24MK M24K	4	14.5 19.7	M24K	10	8.5	M24T(TX)	10	12.3			
36x36	M36MK M36K	6	11.8 16.3	M36K	10	9.9						
48x48	M48MK M48K	9	7.6 13.0	M48K	10	6.6	M48T	10	6.6			
144x144	M144MK	12	7.7									
24x48							M24X48T	10	7.5	MK24X48	9	7.7
48x48										MK48	9	7.5
72x72										MK72	9	7.1

R = minimum radius for curved design in m

W = weight for grid with tiles in kg/m